

Bell & Gossett (ITT)

1/3 • 1/2 • 3/4 Horse Power Pumps

Basement Technologies
The Basement Specialists™
Basement Waterproofing

An American Made Partnership With American Made Quality

Basement Technologies has used a variety of pumping units over the years. We have always believed a pump with heavy duty ball bearing construction and piggy backed plugs should be the choice for the customer concious water proofing company. After extensive testing, we chose Bell & Gossett (ITT) as our primary pump.

Best On The Market

Bell & Gossett (ITT) has been in business for over 80 years and is the premiere American made pump manufacturer in the country. They specialize in heavy duty industrial/commercial pumping units and have "downsized" some of this special technology especially for Basement Technologies. We have committed to Bell & Gossett (ITT) company our entire line of primary dewatering pumps because we are confident that our reputation is compatible with theirs, and they are manufactured here in the United States. We will carry three (3) primary pumps – 1/3, 1/2, and 3/4 horse power.



Improving Basement Waterproofing From The Ground Up™



Superior Performance

Based on a five (5) foot discharge:

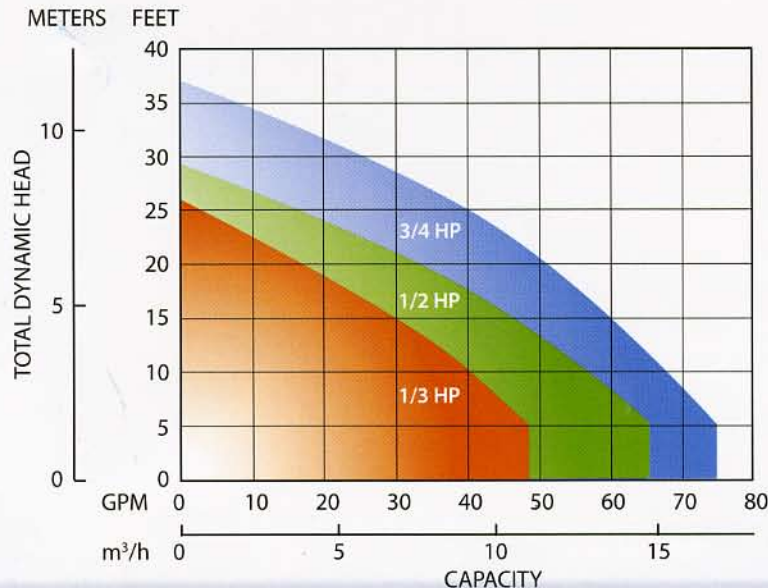
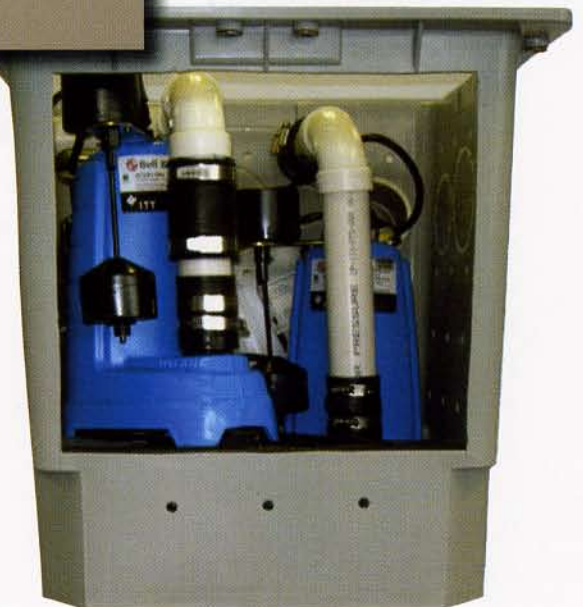
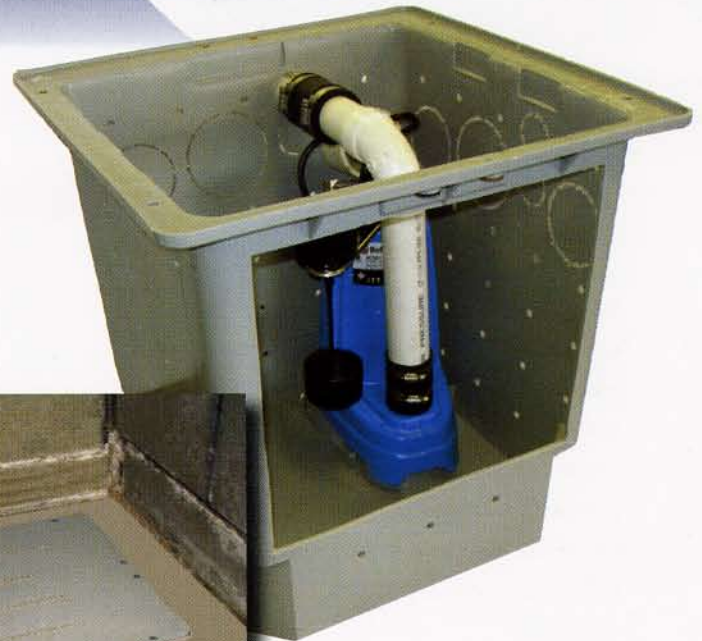
- 1/3 HP – approximately 45 gallons per minute – max. head 26 feet
- 1/2 HP – approximately 65 gallons per minute – max. head 29 feet
- 3/4 HP – approximately 77 gallons per minute – max. head 37 feet

Design Features/Specifications

- Piggy back plugs
- Built in thermal overload protection
- Class B insulation
- Oil filled design
- High strength carbon steel shaft
- Pumps up to 1/2" solids
- Vertical float swing
- Cast iron body
- Corrosion resistant
- Thermo plastic impeller and cover
- Heavy duty lower ball bearing construction with upper sleeve bearings



The neat, clean look of the installed Water Grabber®



1/3, 1/2 & 3/4 HORSEPOWER PUMPS

All of Basement Technologies sub floor Water Trek® systems are based on pumping units. We need the most reliable pump company backing our Water Grabber® units.